

**LOUISIANA
DEPARTMENT OF TRANSPORTATION AND DEVELOPMENT
SPECIFICATIONS**

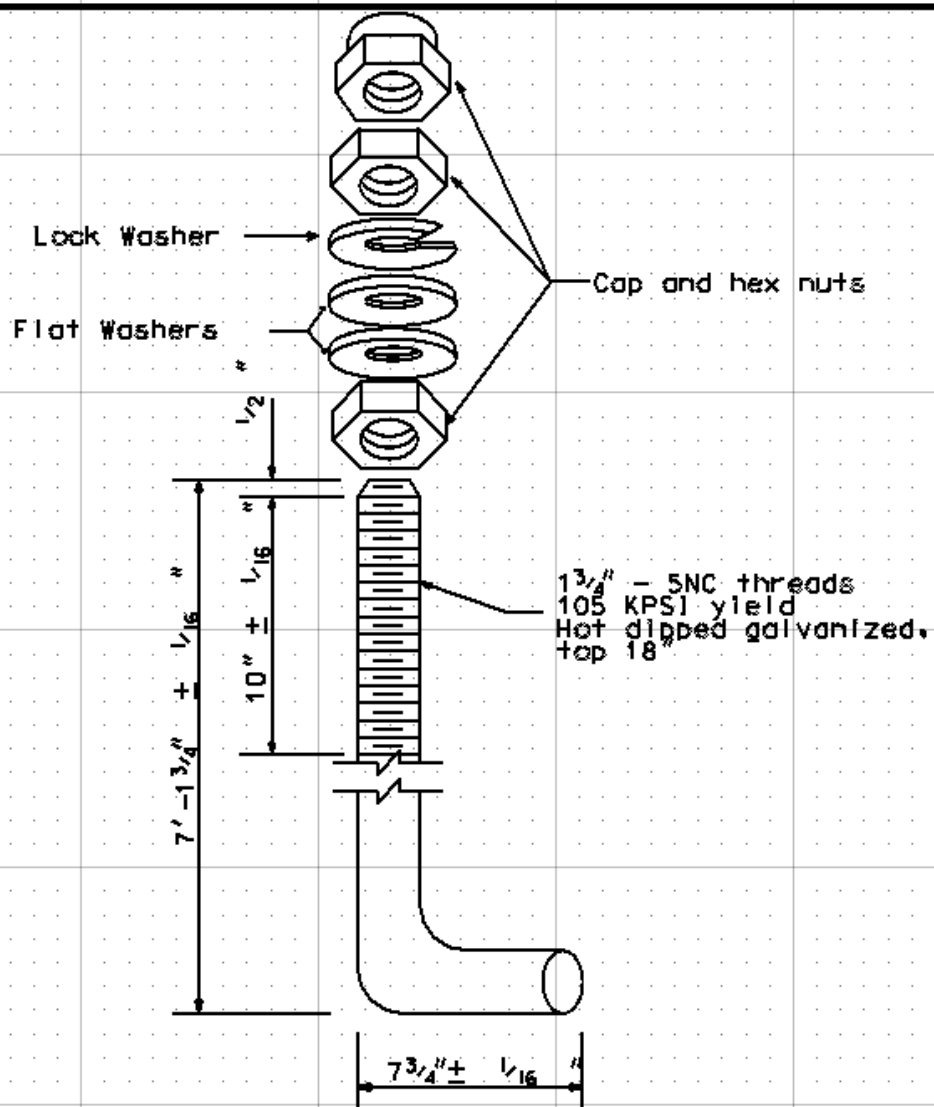
**ANCHOR BOLT ASSEMBLY
FOR STEEL POLE INSTALLATION**

Anchor bolts, cap nut, hex nuts and washers shown in the drawing shall be included. Hardware shall be hot dipped galvanized as well as the top 18 inch of the threads on the anchor bolt as shown in the drawing.

Anchor bolts, with cap nut, hex nuts, lock washer and flat washers, shall be assembled and banded in bundles of four (4).

Anchor bolt assembly to include:

- 4 Anchor Bolts
- 8 Flat Washers
- 4 Lock Washers
- 8 Hex Nuts
- 4 Acorn (Cap) Nuts



NOTES:

1. Material shall be Hot Dipped Galvanized steel
2. Dimensions and material shall conform to ANSI/ASME standards be of A193-B7 Grade steel.

LOUISIANA DEPARTMENT OF TRANSPORTATION AND DEVELOPMENT
 ANCHOR BOLT DETAILS
 DRAWN BY: SDM REVISED DATE: 04/25/2016