



“RE-BUILDING THE CITY’S WATER SYSTEMS FOR THE 21ST CENTURY”

Sewerage & Water Board of NEW ORLEANS

625 ST. JOSEPH STREET
NEW ORLEANS, LA 70165 • 504-529-2837 OR 52-WATER
www.swbno.org

April 30, 2024

Addendum No. 2

Your reference is directed to **Contract 1443 – WEST POWER COMPLEX @ CWTP - CLAIBORNE WATER SUPPLY TIE-IN** for the Sewerage and Water Board of New Orleans which is scheduled to open at **11:30 a.m.** **Local time on May 10, 2024.**

This Addendum consists of 1 Page(s) and 1 Attachment(s).

This addendum provides for the following:

1. Section 01 29 00 – Payment Procedures, Table 1: Payment Items, Reference Number 18 Directionally Drill 12” PCV Pipe REPLACE Measurement and Payment Item Description with the following:
 - a. Materials, labor, equipment, testing, flushing, chlorination, and inspection costs associated with complete supply and installation of pipe, directionally drilled, as shown on the Contract Drawings, including removal and replacement of existing sidewalks, ramps, handrails, etc. as necessary.
2. This Addendum includes the following attachments (not included in the page count):
 - a. Attachment 1 – C1443 Questions and Responses During Bidding Version 0.

The changes, additions, and/or deletions included herein are hereby made part of the Contract Documents for the CP-1443 West Power Complex @ CWTP – Claiborne Water Supply Tie-In project, as fully and completely as if the same were set forth therein. The bidder shall acknowledge receipt thereof on the Form of Proposal.

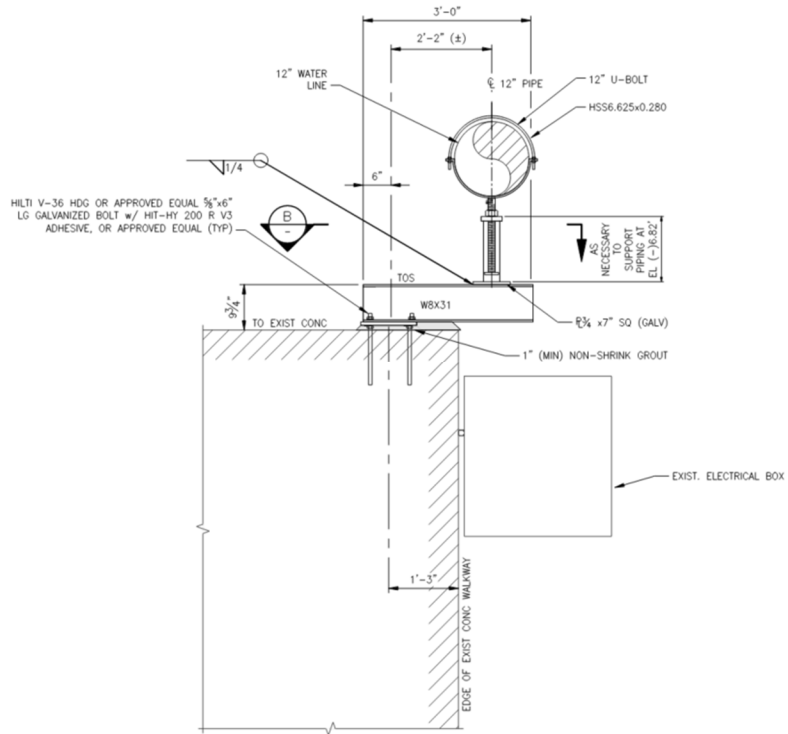
***** END OF ADDENDUM *****

C1443 – WEST POWER COMPLEX @ CWTP - CLAIBORNE WATER SUPPLY
TIE-IN

Questions and Responses During Bidding

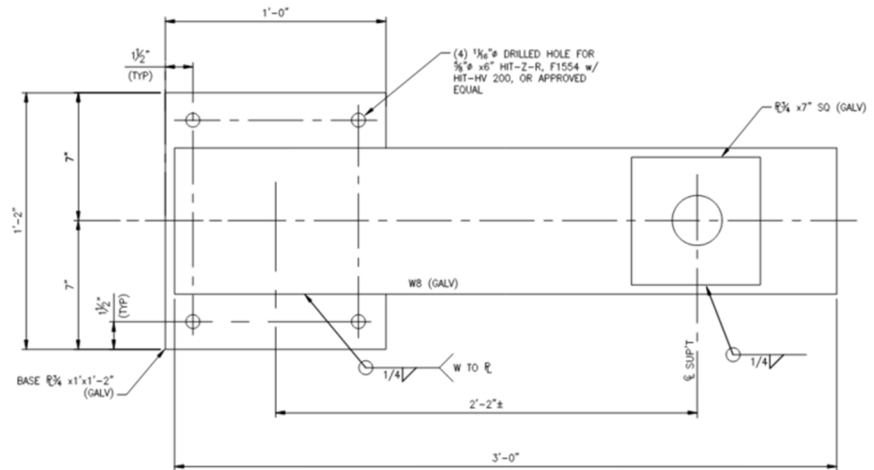
Version 0, Dated: April 29, 2024 [Questions 1-3]

BIDDER QUESTION #1	There are a few spots along the existing sidewalk to remain on plans sheets M2.05 (approx. 36SY) and Sheet M2.07 (approx. 28SY) where the concrete will need to be removed and replaced for the waterline construction. How is this paid?
RESPONSE #1	Per note on drawing M2.05, "Existing ramps, sidewalk, and handrail disturbed during construction shall be repaired in kind. See Vol 4 Reference Drawings, Contract 1403, Sheet 23." Sidewalk or other existing items removed and replaced during the directional drilling efforts shall be included in Directionally Drill 12" PVC Pipe. Payment Item Description will be updated in the Conformed Contract documents to include removal and replacement of sidewalk, ramps, and handrail as necessary.
BIDDER QUESTION #2	On Sheet M2.02, the plans calls for "Pipe Supports, Detail 2 on Sht M4.02", this design will cause issues with the existing handrails. Please advise!
RESPONSE #2	Pipe Support Detail 2 and Section B on M4.02 shall be replaced with the following. Drawing M4.02 will be revised and reissued as part of the Conformed Contract set of drawings.



PIPE SUPPORT DETAIL 2

SCALE: 3/4" = 1'-0"



SECTION B

SCALE: 3" = 1'-0"

BIDDER QUESTION #3

On Sheet C1.00, at approx. station 202+50 a "Remove and Replace Catch Basin No 1" is called out, but I don't see a bid item for this. Is this paid under the Type C Catch Basin Adjustment? Or should a bid item be created.

RESPONSE #3

Yes, this is paid under Type C Catch Basin Adjustment Bid Item 16. Per New Orleans DPW Std Spec C702.02(b)(3), Catch Basin Adjustment Type C “consists of removing the basin completely and rebuilding it either at the same location or at a different location, as directed”.